

Environmental Series™

TURBO® FANS

CHORE-TIME®

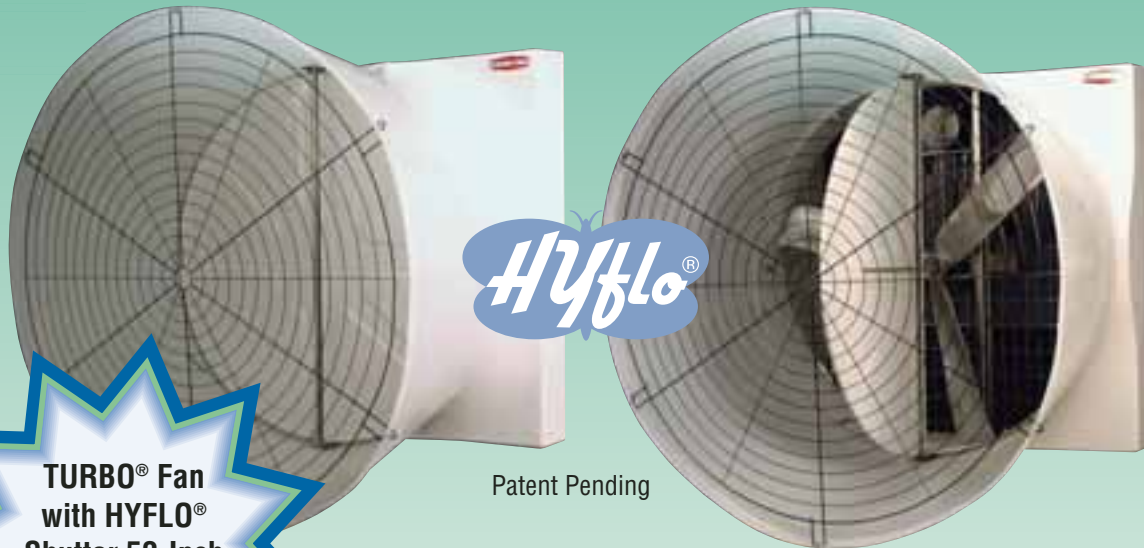
TURBO® FANS
for Hogs



NEW!

TURBO® FIBERGLASS FANS for Hogs

Chore-Time's TURBO® Cone Fan is now available with Chore-Time's HYFLO® Fan Shutter for even greater efficiency. (Patent Pending)



Doors are pushed open as air is exhausted when fan operates, while shutter's unique springs draw the doors closed when the fan is not in operation.

Patent Pending

**TURBO® Fan
with HYFLO®
Shutter 52-Inch
(132.1-cm)
Models Only**

In recent independent wind tunnel tests of fans with efficiencies greater than 20 CFM/watt, Chore-Time's high-capacity 52-inch (132.1-cm) diameter TURBO® Fan with HYFLO® Shutter distinguished itself with the highest CFM rating of all fans tested. Chore-Time's TURBO Fan with HYFLO Shutter provided 29,700 CFM at 0.05 inches static pressure. (Per Bess Labs published results on 12-13-04.)

- Sturdy, corrosion-resistant fiberglass housing with cast aluminum blade and corrosion-resistant components.
- One-piece, impact-resistant, polyethylene cone has 64-inch (162.6-cm) outside diameter, but can be compressed for 60-inch-on-center (152.4-cm) installation.
- Automatic belt tensioner uses arm and pulley arrangement to provide consistent belt tension.
- Heavy-duty, cast iron, air-handler type bearings are self-aligning, pre-lubricated, and include a zerk fitting, as well as being shielded from moisture and dust.
- Fans are shipped fully assembled including shutter doors. At installation, simply attach fan to house sidewall, add one-piece cone, and snap grill in place. Unit installs flush on inside of house.
- Backed by Chore-Time's generous extended warranty including limited lifetime coverage for housing and blade, and a bonus

year on motors. (See Chore-Time full written warranty for complete warranty details.)

Wire and spring attachment between doors keeps doors together, but allows them to float left or right for maximum efficiency.

Chore-Time's HYFLO® Shutter minimizes obstructions during fan operation and seals tighter when not operating.

Users may choose black or white for housing interior and cone. Housing exterior is white.



- Delivers up to 10% more air with 75% less opportunity for air to leak through compared to a traditional louver shutter.
- HYFLO Doors do not suffer the typical 12-15% loss of efficiency and air speed typical of dirty louver-style shutters, so air speed is maintained over time.
- The HYFLO Shutter consists of only two moving parts for greater reliability and easier cleaning.



TURBO® Fan with Louver Shutter



Chore-Time's TURBO® Cone Fan provides high efficiency and corrosion resistance.

- Corrosion-resistant, reinforced-fiberglass housing with aluminum motor mounts and a heavy cast-aluminum blade.
- Backed by Chore-Time's generous extended warranty including limited lifetime coverage for housing and blade, and a bonus year on motors. (See Chore-Time's full written warranty for complete warranty details.)
- High CFM and CFM/watt, even under high static pressure.
- Heavy-duty, cast iron, air-handler type bearings are self-aligning, pre-lubricated, and include a zerk fitting as well as being shielded from moisture and dust.
- Grill simply snaps into impact-resistant, polyethylene, one-piece cone with no fasteners required.



One-piece cone improves air flow up to 14% and efficiency up to 21%.

TURBO® Fan with Louver Shutter
14- through 48-Inch
(35.6- through 121.9-cm)
Models

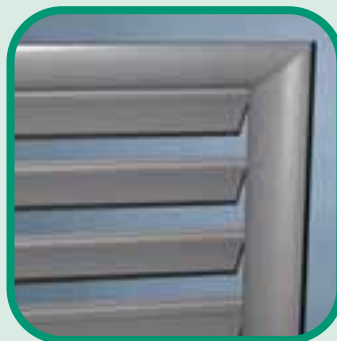


Chore-Time's 48-inch (121.9-cm) fan is also offered in a light-restricting version with a black interior housing surface and a black cone.

Optional hood for 24-inch (610-mm) and smaller fans.



Belled shutter has a curved, aerodynamic frame.



Flexible louver edge helps seal the fan's opening.

Chore-Time's Louver Shutters come in an aerodynamic "belled" style frame for greater efficiency as well as in a flat frame model for flush mounting. Available in white or gray.

- Louvers' flexible edge helps seal the fan's opening when fan is at rest.
- Corrosion-proof vinyl construction with a rigid vinyl frame and fiberglass rod hinges for the louvers.
- Louvers are easy to replace and have a smooth, easy-care finish for low maintenance.

TURBO® FIBERGLASS FAN SPECIFICATIONS



CONE FANS With HYFLO® SHUTTERS

Drive	Type	Fan P/N	.00 Static Pressure		.05 Static Pressure		.10 Static Pressure		Air Flow Ratio	Bess Labs Test Number
			CFM	CFM/Watt	CFM	CFM/Watt	CFM	CFM/Watt		
52-Inch (132.1 cm) Fans with NEW HYFLO™ Shutter (1 Phase)										
BD	Standard	49740-22	28,700	26.4	27,000	23.5	24,900	20.8	0.73	04334
BD	High-Capacity	49740-21	N/A	N/A	29,700	20.5	27,700	18.3	0.79	04312
52-Inch (132.1 cm) Fans with NEW HYFLO™ Shutter (3 Phase)										
BD	Standard	49740-42	28,800	26.3	27,100	23.3	24,800	20.5	0.73	04335
BD	High-Capacity	49740-41	N/A	N/A	29,700	20.3	27,900	18.2	0.79	04318

CONE FANS With LOUVER SHUTTERS

Drive	Type	Fan P/N	.00 Static Pressure		.05 Static Pressure		.10 Static Pressure		Air Flow Ratio	Bess Labs Test Number
			CFM	CFM/Watt	CFM	CFM/Watt	CFM	CFM/Watt		
48 Inch (121.9-cm) Fans with Bell Louver Shutter - Choose Grill or High-Efficiency Cone; Light Restriction Model Available										
BD	48-Inch Standard	38264-4825	25,200	23.9	23,600	21.2	22,100	19.0	0.74	04332
BD	48-Inch High-Cap.	47898-4825	27,700	19.6	26,400	18.0	24,960	16.3	0.83	02473
36 Inch (91.4-cm) Fans with Flat Louver Shutter for Flush-Mount - Choose Grill Model or High-Efficiency Cone										
DD	36-Inch (91.4-cm)	38265-3622	11,710	20.5	10,970	18.6	10,200	16.8	0.73	96159
BD	36-Inch (91.4-cm)	38589-3622	12,640	20.8	11,960	19.0	11,190	17.0	0.79	96199
Variable Speed Fans with Flat Louver Shutter for Flush-Mount - Choose Hood Model or High-Efficiency Cone										
DD	24-Inch (61.0-cm)	40452-2422	6,400	17.8	5,990	16.2	5,550	15.0	0.73	98012
DD	18-Inch (45.7-cm)	40452-1822	4,180	15.2	4,010	14.1	3,870	13.0	0.87	98008
DD	14-Inch (35.6-cm)	40452-1422	2,120	14.8	2,030	13.8	1,910	12.6	0.78	98059

HOOD FANS

Drive	Type	Fan P/N	.00 Static Pressure		.05 Static Pressure		.10 Static Pressure		Air Flow Ratio	Bess Labs Test Number
			CFM	CFM/Watt	CFM	CFM/Watt	CFM	CFM/Watt		
DD	24-Inch (61.0-cm)	40453-2422	4,890	13.0	4,510	12.1	4,150	11.1	0.55	98013
DD	18-Inch (45.7-cm)	40453-1822	N/A	N/A	3,160	9.6	3,010	9.2	0.84	98009
DD	14-Inch (35.6-cm)	40453-1422	1,580	9.7	1,500	9.2	1,380	8.7	0.54	98010

GRILL FANS

Drive	Type	Fan P/N	.00 Static Pressure		.05 Static Pressure		.10 Static Pressure		Air Flow Ratio	Bess Labs Test Number
			CFM	CFM/Watt	CFM	CFM/Watt	CFM	CFM/Watt		
BD	48-Inch (121.9-cm)	38953-4822	22,100	18.6	20,900	17.1	19,400	15.6	0.77	96167
DD	36-Inch (91.4-cm)	38789-3622	10,950	16.7	10,300	15.3	9,590	13.8	0.78	96326

Warranty and Service

Chore-Time's ventilation systems are backed by a generous warranty and by a worldwide network of trained technical service and distributor professionals.

For the distributor nearest you, contact Chore-Time's Hog Production Systems Customer Service Department at 800-341-1039.



Chore-Time Hog Production Systems
 A Division of CTB, Inc.
 P.O. Box 2000 • Milford, Indiana 46542-2000
 Phone 800-341-1039 or 574-658-4101
 Fax 877-730-8825 or 574-658-3471
 E-Mail Address: hog@choretime.com
 Internet: www.choretime.com